



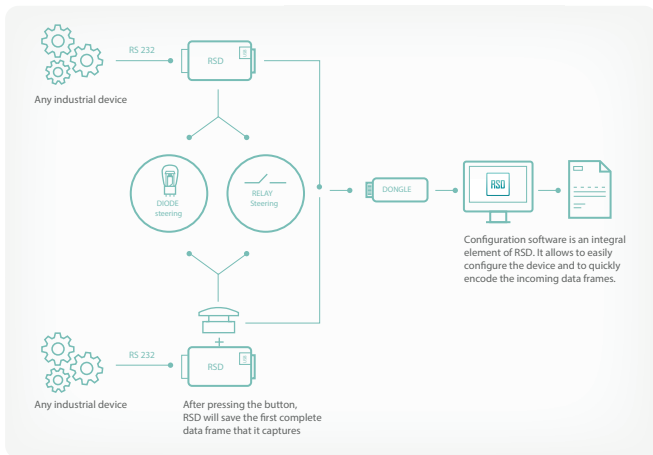
UNIVERSAL SERIAL DATA RECORDER 32 GB Max memory

RECORDING DATA FROM SERIAL COMMUNICATION (RS 232)

RSD is a modern, self-contained, ready-to-run simple electronic device for recording any type of data sent from RS 232 serial port. Receiving single data frame at a time is signaled by a brief flash of led diode or through steering solid state relay - with timely programmed response set earlier in configuration. Saved data frames can be quickly transmitted to dongle. The encoded results can be comfortably viewed thanks to enclosed configuration software.

RSD – TWO WORKING MODES

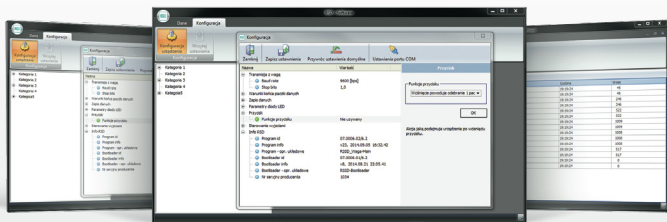
1st WORKING MODE — recording all the incoming data (data frames)



2nd WORKING MODE — enables to select a certain moment in time (activating digital input in RSD) during which RSD will save data frame in its memory. This mode is to be used only with continuous transmission.

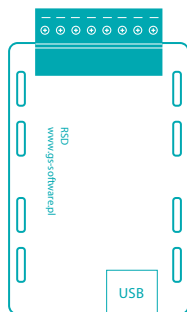
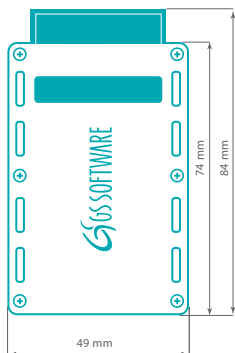


1. Analysis of data stored in RSD memory
2. Encoding/reading data from RSD
3. Configuration features
 - setting criteria to describe the end of data frame and timeout
 - serial port parameters settings
 - relay parameters on-off settings
 - working mode settings - continuous/on demand recording
4. Data export to csv and txt file formats



TECHNICAL SPECIFICATION

KATEGORIA	PARAMETR
USB	
Compliance	USB 1.0/1.1
Compatibility	USB 2.0, 3.0
Type of joint	USB Adapter A socket
System file format	FAT 32
SERIAL PORT	
Interface	RS-232 (Only RX, GND signals)
Type of joint	Screw terminal
Baudrate	1200 bps to 115200 bps
Transmission end bits	1,2
ENVIRONMENTAL LIMITS	
Operating Temperature	From -10 to 50 C
Degrees of Protection (IP)	IP40
PHYSICAL CHARACTERISTICS	
Weight	40 g
Dimensions	49x84x15mm
Casing materials	PCV (foamed)
POWER REQUIREMENTS	
Input voltage	9 - 24VDC (Power consumption Max 1A)
RELAY	
Type of relay	Semiconductor
MEMORY	
Memory capacity	4, 8, 16, 32 GB (depending on type)



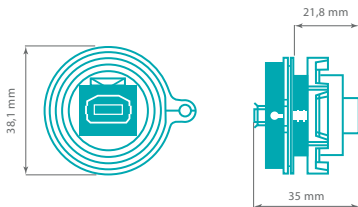
CONTENT OF THE PACKAGE

Package contains RSD device in polypropylene case with configuration software

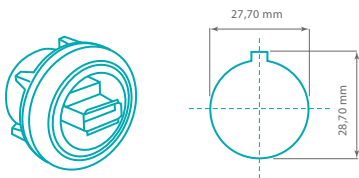
TYPE OF DEVICE	RECORDER'S MEMORY	ORDERING KEY
RSD-4	4 GB	HDW-RSD-4
RSD-8	8 GB	HDW-RSD-8
RSD-16	16 GB	HDW-RSD-16
RSD-32	32 GB	HDW-RSD-32

TYPE OF ACCESSORY	ORDERING KEY
Adapter USB A socket. Dimensions: 35/38/26 (height/width/depth) IP 68	HDW-32
USB A socket head cup/protection cover for Adapter	HDW-33
Led diode with housing IP 67	HDW-34
Solid-state relay	HDW-35
Power adapter 9V DC 1A	HDW-36
DIN Rail Power Supply 24V DC 1,3A	HDW-37
USB A male cable - two tail (Conductors for device configuration)	HDW-38
USB Key 8 GB	HDW-39

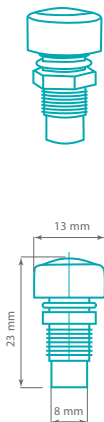
ADAPTER USB A SOCKET (HDW-32)



USB A SOCKET- CUTSET OF DIAMETER (HDW-32)



LED DIODE WITH HOUSING - (HDW - 34)



GS SOFTWARE

GS Software
 Grzegorz Stolarski Robert Trawiński sp.j.
 ul. Półnanki 80 lok. 402
 30 -740 Kraków
 POLAND
 All Rights Reserved

Tel + 48 12 357 67 57
 www.gs-software.pl
 office@gs-software.pl